

Enclosed Laboratory Filtration System BECO INTEGRA® LAB 60 P

Versatile Sanitary Design Laboratory Depth Filtration System

BECO INTEGRA LAB 60 P is an enclosed single-sheet depth filtration system with a wide range of accessories for small volume filtration tasks in laboratories and research centers. The areas of application include small batches and upscaling in biotechnology and pharmaceutical, chemical, and cosmetics industries.

Special Features

- **Simple and clearly arranged design** with many connection, valve, and pressure measurement options.
- An O-ring sealing ensures a **high level of safety** by preventing leakage to the surrounding atmosphere.
- Ergonomic design for **easy handling**. **Effortless** replacement of BECO® depth filter sheets; thorough and **easy cleaning**, no dead spaces.
- **Variable application possibilities** by using the base filter and sludge chambers of various size (with and without heating) for sheet and cake filtration.
- System components enable **parallel or step filtration** processes using one arrangement of several filters.

Other models and enhancements with additional components for complete systems are possible according to requirements.

Technical Data

Max. permissible operating pressure:	87 psi (600 kPa/6 bar)
Max. permissible differential pressure:	58 psid (400 kPa/4 bar)
Max. permissible operating temperature:	284°F (140°C)
Depth filter size:	Ø 2.36", 0.08–0.16" thick (Ø 60 mm, 2–4 mm)
Filter area:	3.25 in ² (21 cm ²)
Weight:	2.20 lbs (1 kg)



Material

Product contacting parts:	Stainless steel AISI 316L/ Stainless steel AISI 316Ti
Others:	Stainless steel AISI 304
Gaskets, O-rings:	EPDM, Silicone, Viton, FEP coated

Connections

Filter inlet:	DN 8 ,Tri-Clamp, ISO 1127
Filter outlet:	DN 8 ,Tri-Clamp, ISO 1127

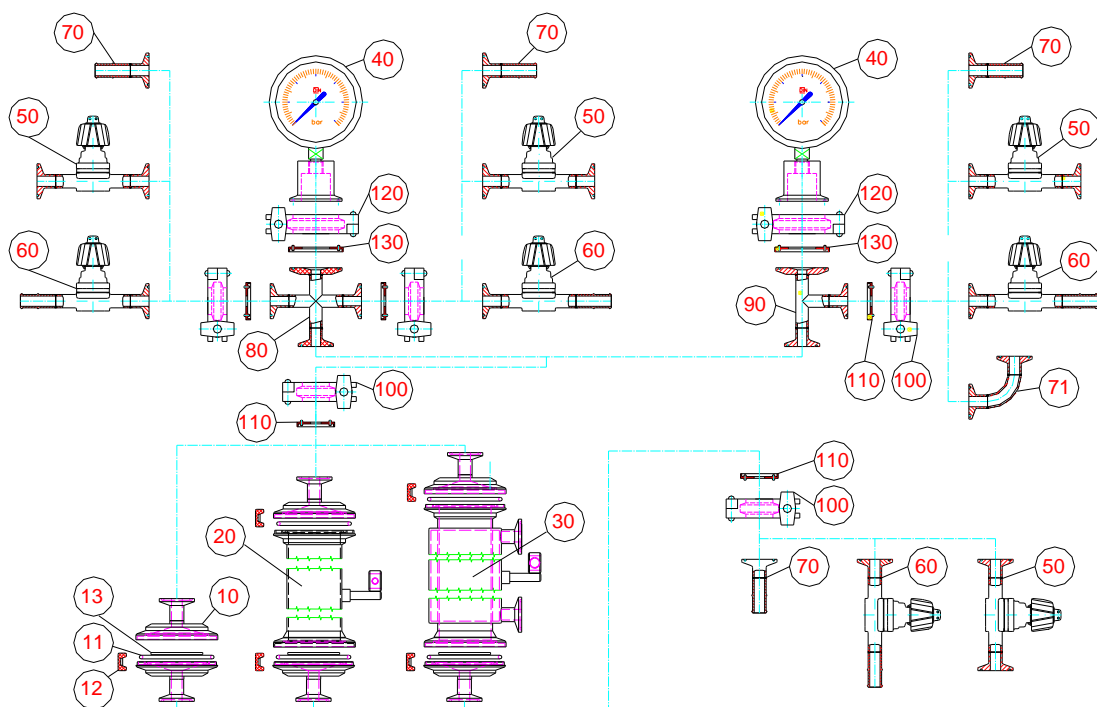


Pos.	Description	Article no.
10	BECO INTEGRA LAB 60 P (including 11.1, 11.2 (EPDM),12 + 13)	P7000302
12	Clamp BECO INTEGRA LAB 60 P	560630
13	Perforated plate BECO INTEGRA LAB 60 P	560604
40	Diaphragm pressure gauge 0 – 87 psi (0 – 600 kPa/0 – 6 bar), NG 63	P7400101
70	Adapter TC DN 8* - Hose clip DN10 DIN 11854 (external diameter 1/2" = 12.7 mm)	P7500301
70	Adapter TC DN 8* - Hose clip 3/8"	P7500302
70	Adapter TC DN 8* - Hose clip 1/4"	P7500305
71	90° bend with 2 x TC DN 8*	P7500401
80	Cross piece 3 x TC DN 8*, 1 x TC DN 25**	P7500101
90	T-piece 2 x TC DN 8*, 1 x TC DN 25**	P7500201
100	Clamp DN 8	P7510101
120	Clamp DN 25	P7510001

Pos.	Description	8.45 oz (250 ml)	16.97 oz (500 ml)	33.8 oz (1,000 ml)
20	Filling space (without Pos. 11+12)	P7000602	P7000702	P7000802
30	Filling space with heating jacket (without Pos. 11 + 12)	P7000603	P7000703	P7000803

Pos.	Description	EPDM	Silicone	Viton	FEP coated
11.1	O-ring gasket BECO INTEGRA LAB 60 P for depth filters 0.08–0.14" (2–3.5 mm)	P7800305	P7800307	P7800306	P7800308
11.2	O-ring gasket BECO INTEGRA LAB 60 P for depth filters 0.14–0.18" (3.5–4.5 mm)	P7800309	P7800311	P7800310	P7800312
50	Diaphragm valve DN 8, 2 x TC DN 8*	P7400201	-	P7400203	P7400204
60	Diaphragm valve DN 8, TC DN 8*/Hose clip	P7400301	-	P7400303	P7400304
110	Clamp gasket DN 8	P7510301	P7510302	P7510303	P7510304
130	Clamp gasket DN 25	P7510201	P7510202	P7510203	P7510204

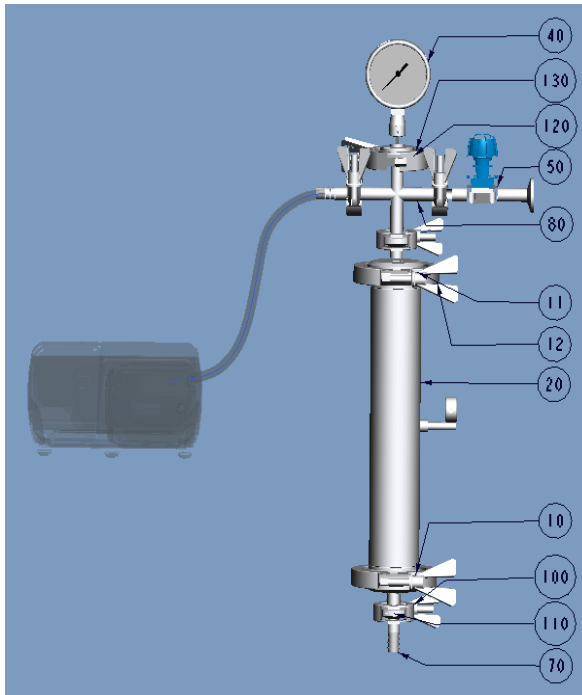
* Tri-Clamp DN 8, ISO 1127 ** Tri-Clamp DN 25, ISO 1127



Potential constellation:

BECO INTEGRA LAB 60 P (version equipped with EPDM gaskets) - with filling space of 16.90 oz (500 ml)

Pos.	Description	Article no.	Qty.
10	BECO INTEGRA LAB 60 P	P7000302	1
20	Filling space 500 ml	P7000702	1
12	Clamp BECO INTEGRA LAB 60 P	560630	1
11	O-ring BECO INTEGRA LAB 60 P	P7800305	1
40	Diaphragm pressure gauge 0 – 87 psi (0 – 600 kPa/ 0 – 6 bar), NG 63	P7400101	1
50	Diaphragm valve DN 8, 2 x TC DN 8	P7400201	1
70	Adapter TC DN 8 – Hose clip 3/8"	P7500302	2
80	Cross piece 3 x TC DN 8*, 1 x TC DN 25	P7500101	1
100	Clamp DN 8	P7510101	4
110	Clamp gasket DN 8, EPDM	P7510301	4
120	Clamp DN 25	P7510001	1
130	Clamp gasket DN 25, EPDM	P7510201	1



Alternatively, gaskets are available in Silicone, Viton and Silicone/FEP-coated material.

Still required (provided by the customer):

- Peristaltic pump with hoses (chemically resistant)
- Holding device for BECO INTEGRA LAB 60 / filling space: tripod
- Depth Filter Sheets Ø 60 mm

North America
44 Apple Street
Tinton Falls, NJ 07724
Toll Free: 800 656-3344
(North America only)
Tel: +1 732 212-4700

Greater China
No. 7, Lane 280,
Linhong Road
Changning District, 200335
Shanghai, P.R. China
Tel: +86 21 5200-0099

Europe/Africa/Middle East
Auf der Heide 2
53947 Nettersheim, Germany
Tel: +49 2486 809-0

Friedensstraße 41
68804 Altlußheim, Germany
Tel: +49 6205 2094-0

An den Nahewiesen 24
55450 Langenlonsheim, Germany
Tel: +49 6704 204-0

Asia-Pacific
100G Pasir Panjang Road
#07-08 Interlocal Centre
Singapore 118523
Tel: +65 6825-1668

**For more information, please
email us at filtration@eaton.com
or visit www.eaton.com/filtration**

EN
1 A 2.6.21.1
09-2021