

## Enclosed Laboratory Filtration System BECO INTEGRA® LAB 220 P

### Versatile, Sanitary Design Laboratory Depth Filtration System

BECO INTEGRA LAB 220 P depth filtration system is for small volume filtration tasks in laboratories and research centers. The areas of application include small batches and up-scaling in biotechnology and pharmaceutical, chemical, and cosmetics industries.

BECO INTEGRA LAB 220 P's special design of two round, vertical filter elements on the left and right sides in the filter chamber, makes it possible to transfer the test results directly from the laboratory or research center to production scale equipment.



#### Special Features

- **Simple and clearly arranged design** with many connection, valve, and pressure measurement options.
- An O-ring sealing gasket ensures a **high level of safety** by preventing leakage to the surrounding atmosphere.
- Ergonomic design for **easy handling**. **Effortless** replacement of BECO® depth filter sheets; thorough and **easy cleaning**, no dead spaces.
- Combine multiple steps such as pre-filtration and sterilizing filtration into one filtration step, simply by installing two different BECO depth filter sheets. One, coarse and fine filtration, the other, powder and fine filtration.

**Other models** and enhancements with additional components for complete systems are possible according to requirements.

#### Technical Data

<b>Max. permissible operating pressure:</b>	58 psi (400 kPa/4 bar)
<b>Max. permissible differential pressure:</b>	43.5 psid (300 kPa/3 bar)
<b>Max. permissible operating temperature:</b>	284°F (140°C)

#### Filter

<b>Depth filter sheet size:</b>	8.74" (222 mm)
<b>Filter area:</b>	0.33 ft² (310 cm²)/ depth filter sheet
<b>Weight:</b>	30,86 lbs (14 kg)
<b>Number of depth filter sheets</b>	
<b>Single stage filtration:</b>	1 or 2 sheets
<b>Two stage filtrations:</b>	1 x 2 or 2 x 2 sheets
<b>Cake frame width:</b>	1.58" (40 mm)
<b>Max. cake volume:</b>	0.33 gal (1.25 l)

#### Material

<b>Product contacting parts:</b>	Stainless steel AISI 316L/AISI 316 Ti
<b>Others:</b>	Stainless steel AISI 304
<b>Gaskets, O-rings:</b>	EPDM, Silicone, Viton, FEP coated

#### Connections

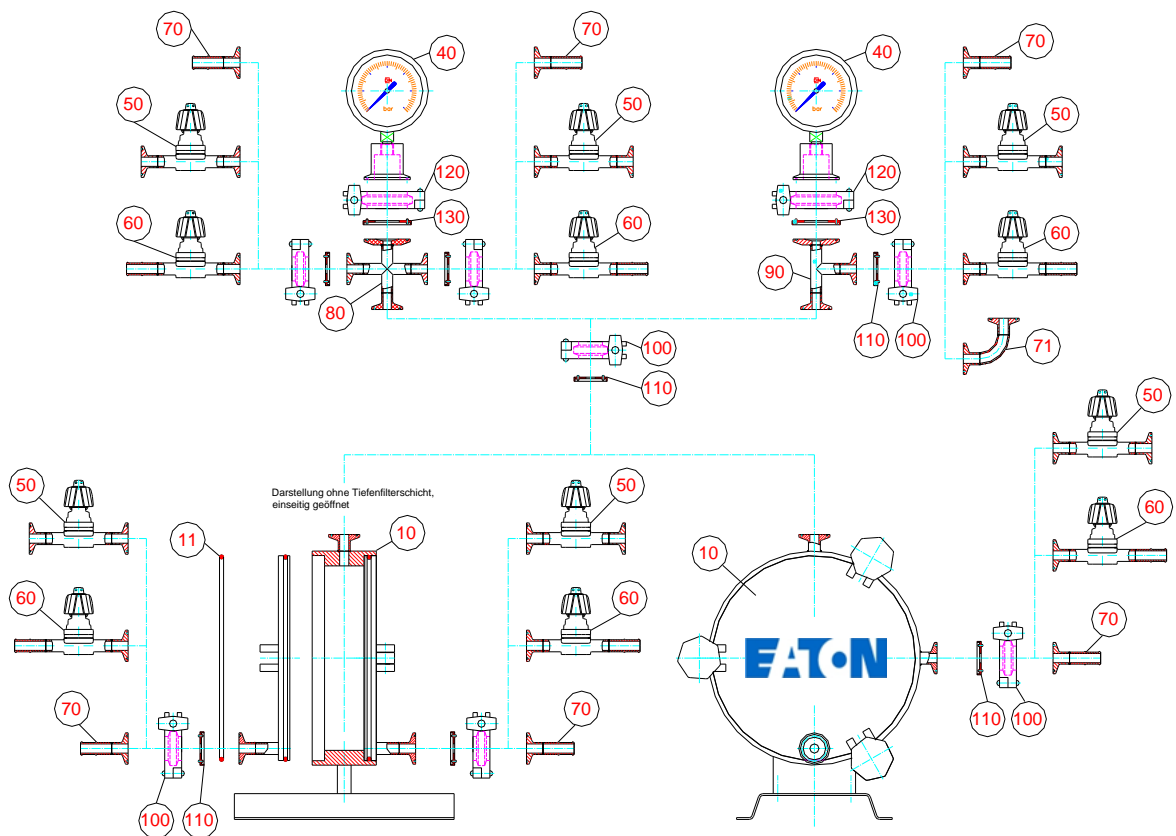
<b>Filter inlet:</b>	DN 8 ,Tri-Clamp, ISO 2852
<b>Filter outlet:</b>	DN 8 ,Tri-Clamp, ISO 2852



Pos.	Description	Article no.
10	BECO INTEGRA LAB 220 P (including Pos. 11(EPDM))	P7001001
40	Diaphragm pressure gauge 0–87 psi (0–600 kPa/0–6 bar), NG 63	P7400101
70	Adapter TC DN 8* - Hose clip DN10 DIN 11854 (external diameter 1/2" = 12.7 mm)	P7500301
70	Adapter TC DN 8* - Hose clip 3/8"	P7500302
70	Adapter TC DN 8* - Hose clip 1/4"	P7500305
71	90° bend with mit 2 x TC DN 8*	P7500401
80	Cross piece, 3 x TC DN 8*, 1 x TC DN 25**	P7500101
90	T-piece 2 x TC DN 8*, 1 x TC DN 25**	P7500201
100	Tri-Clamp DN 8	P7510101
120	Tri-Clamp DN 25	P7510001
	Lever for round filter	P7800105
	Star knob 50 x M10 (knurled nut)	P7800101

Pos.	Description	EPDM	Silicone	Viton	FEP coated
11	O-ring BECO INTEGRA LAB 220 P	59262117	P7800302	59262118	P7800304
50	Diaphragm valve DN 8, 2 x TC DN 8*	P7400201	-	P7400203	P7400204
60	Diaphragm valve DN 8, TC DN 8*/Hose clip	P7400301	-	P7400303	P7400304
110	Clamp gasket DN 8	P7510301	P7510302	P7510303	P7510304
130	Clamp gasket DN 25	P7510201	P7510202	P7510203	P7510204

\* Tri-Clamp DN 8, ISO 2852 \*\* Tri-Clamp DN 25, ISO 2852



**Possible constellation:**

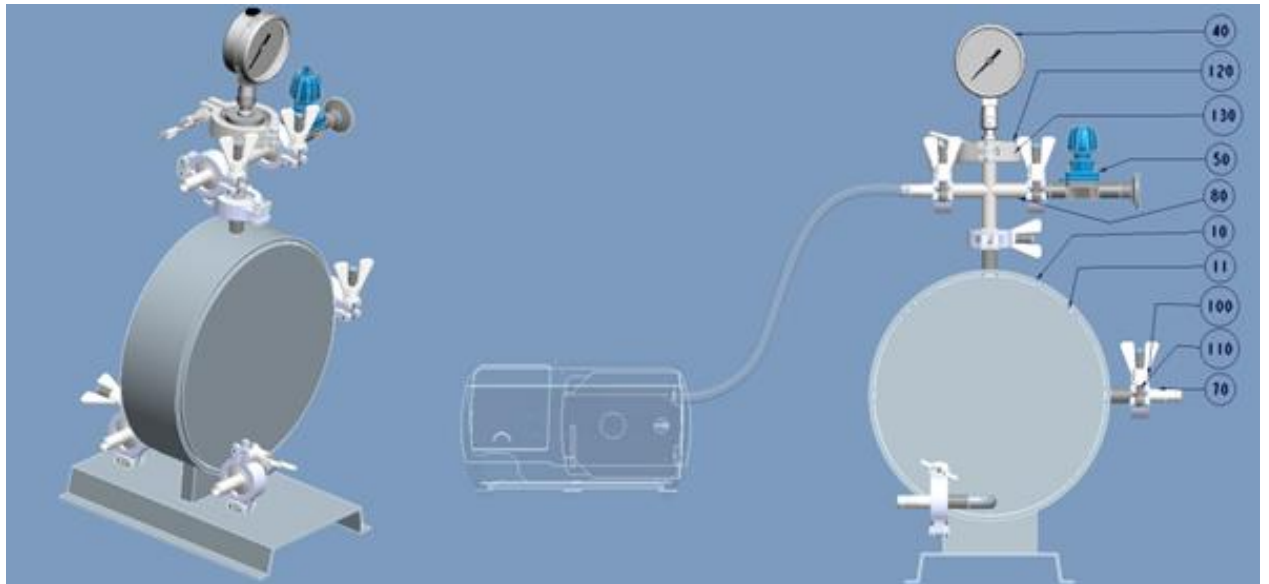
**BECO INTEGRA LAB 220 P – configuration for compressed gas or pump for the depth and cake filtration  
(version equipped with EPDM gaskets)**

Pos.	Description	Article no.	Quantity
10	BECO INTEGRA LAB 220 P	P7001001	1
11	O-ring BECO INTEGRA LAB 220 P	59262117	2
40	Diaphragm pressure gauge 0–87 psi (0–600 kPa/0–6 bar), NG 63	P7400101	1
50	Diaphragm valve DN 8, 2 x TC DN 8	P7400201	1
70	Adapter TC DN 8 - Hose clip 3/8"	P7500302	4
80	Cross piece, 3 x TC DN 8, 1 x TC DN 25	P7500101	1
100	Tri-Clamp DN 8	P7510101	6
110	Clamp gasket DN 8	P7510301	6
120	Tri-Clamp DN 25	P7510001	1
130	Clamp gasket DN 25	P7510201	1

Alternatively, gaskets are available in Silicone, Viton and Silicone/FEP-coated material.

**Still required (provided by customer):**

- Peristaltic pump with hoses (chemically resistant)
- Depth Filter Sheets Ø 222 mm



**North America**  
44 Apple Street  
Tinton Falls, NJ 07724  
Toll Free: 800 656-3344  
(North America only)  
Tel: +1 732 212-4700

**Greater China**  
No. 7, Lane 280,  
Linhong Road  
Changning District, 200335  
Shanghai, P.R. China  
Tel: +86 21 5200-0099

**Europe/Africa/Middle East**  
Auf der Heide 2  
53947 Nettersheim, Germany  
Tel: +49 2486 809-0  
  
Friedensstraße 41  
68804 Altlußheim, Germany  
Tel: +49 6205 2094-0

**Asia-Pacific**  
100G Pasir Panjang Road  
#07-08 Interlocal Centre  
Singapore 118523  
Tel: +65 6825-1668

An den Nahewiesen 24  
55450 Langenlonsheim, Germany  
Tel: +49 6704 204-0



**For more information, please  
email us at [filtration@eaton.com](mailto:filtration@eaton.com)  
or visit [www.eaton.com/filtration](http://www.eaton.com/filtration)**

© 2021 Eaton. All rights reserved. All trademarks and registered trademarks are the property of their respective owners. All information and recommendations appearing in this brochure concerning the use of products described herein are based on tests believed to be reliable. However, it is the user's responsibility to determine the suitability for his own use of such products. Since the actual use by others is beyond our control, no guarantee, expressed or implied, is made by Eaton as to the effects of such use or the results to be obtained. Eaton assumes no liability arising out of the use by others of such products. Nor is the information herein to be construed as absolutely complete, since additional information may be necessary or desirable when particular or exceptional conditions or circumstances exist or because of applicable laws or government regulations.

EN  
1 A 2.6.21.3  
09-2021